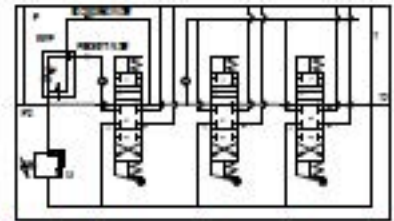
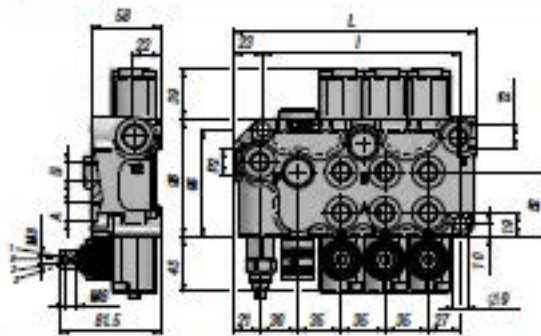


BF 400

Qn
35 l/min

Q max
45 l/min

DISTRIBUTEUR MONOBLOC + RFP
MONOBLOCK VALVE + RFP
DISTRIBUIDOR MONOBLOQUE + RFP



Code Code Código	Type Type Tipo	N° Leviers Sections No. Nr. Palancas	Orifices - Threads - Orificios					PN bar	P MAX U bar	P MAX S bar	L	I	kg
			A-B BSP	P BSP	T BSP	P2 BSP	T2 BSP						
D8F2111001	BF 401/1/GU/MO A1	1								125	90	3,90	
D8F2211001	BF 401/2/GU/MO A1x2	2							160	125	5,20		
D8F2311001	BF 401/3/GU/MO A1x3	3	3/8"	3/8"	3/8"	1/2"	1/2"	250	320	80	195	160	6,40
D8F2411001	BF 401/4/GU/MO A1x4	4							230	195	7,60		
D8F2511001	BF 401/5/GU/MO A1x5	5							265	230	8,80		
D8F2611001	BF 401/6/GU/MO A1x6	6							300	265	10,00		

RFP - Regulateur de débit prioritaire (compense en pression) - Priority control flow divider (pressure compensated) - Regulador de caudal con válvula prioritaria de presión compensada

PN - Pression nominale - Nominal pressure - Presión nominal

P MAX U - Pression maxi sur les orifices - Max. pressure on ports - Presión Max. sobre los orificios

P MAX S - Pression maxi sur le retour - Max. pressure in tank-line - Presión Max. al retorno

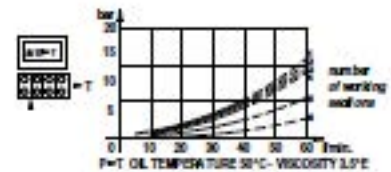
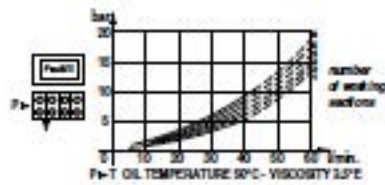
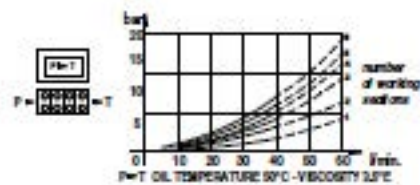
Limiteur de pression - Relief Valve - Limitador de presión: X = 30:90 bar (70) - U = 80:230 bar (140) (Standard) - K = 150:300 bar (200)

LES CODES CORRESPONDANT A - THESE CODES AND PRICES REFER TO - LOS CODIGOS SE REFIEREN A LOS MODELOS DE:

DOUBLE EFFET - 3 POSITIONS - RAPPEL RESSORT - A/B FERMEE - ORIFICES BSP - PREDISPOSITION POUR CENTRE A SUIVRE

DOUBLE ACTING TYPE - 3 POSITIONS - SPRING RETURN - A/B PORTS CLOSED - BSP THREADS - MACHINED FOR CARRY-OVER

DOBLE EFECTO - 3 POSICIONES - RETORNO POR MUELLE - A/B CERRADOS - ROSCAS BSP - PREPARADO PARA RETORNO A PRESION (CARRY-OVER)



	TIROIR SPOOL TYPE - CORREDERAS
A	
B	
C	
D	
L	
Z	

	POSITIONNEUR SPOOL CONTROL - POSICIONADOR
1	
2	
3	
6	
7	
8	
12	
42	

	SUR DEMANDE ON REQUEST - BAJO PEDIDO
MC	commande manuelle + fclon manual operator with cam accionamiento manual con leva
MX	levier de sécurité safety lever palanca de seguridad
DO	came de commande cam operator control por levas
JS	double commande joystick joystick
1P	commande pneumatique pneumatic operator accionamiento neumático
MSW	microrupteur microswitch microinterruptor
CO	centre a suivre power beyond (carry over) retorno a presión (carry over)

BF400 da 1 a 6 leve

BF400 from 1 to 6 levers

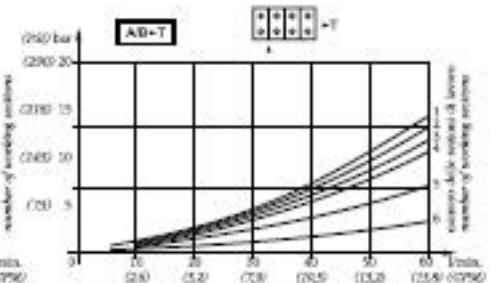
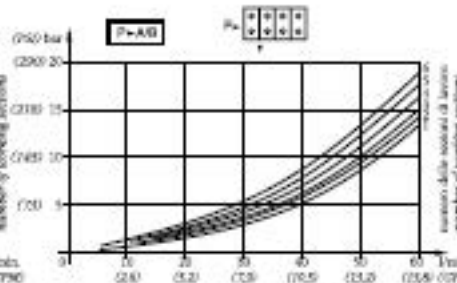
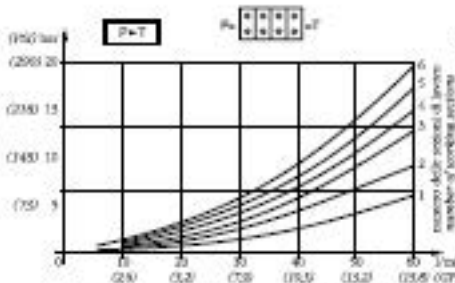
Caratteristiche generali / Technical characteristics		
	l/min	GPM
• Portata nominale / Nominal flow	35	9
• Portata limite / Max flow	45	12
	bar	PSI
• Pressione nominale / Nominal pressure	250	3600
• Pressione max sugli utilizzi / Max pressure on parts	320	4700
• Contoppressione max allo scarico / Max pressure in tank-line	80	1100



MT - TEMPERATURA OLIO 50°C - VISCOSITÀ 5,5 cP

PA/B - TEMPERATURA OLIO 50°C - VISCOSITÀ 5,5 cP

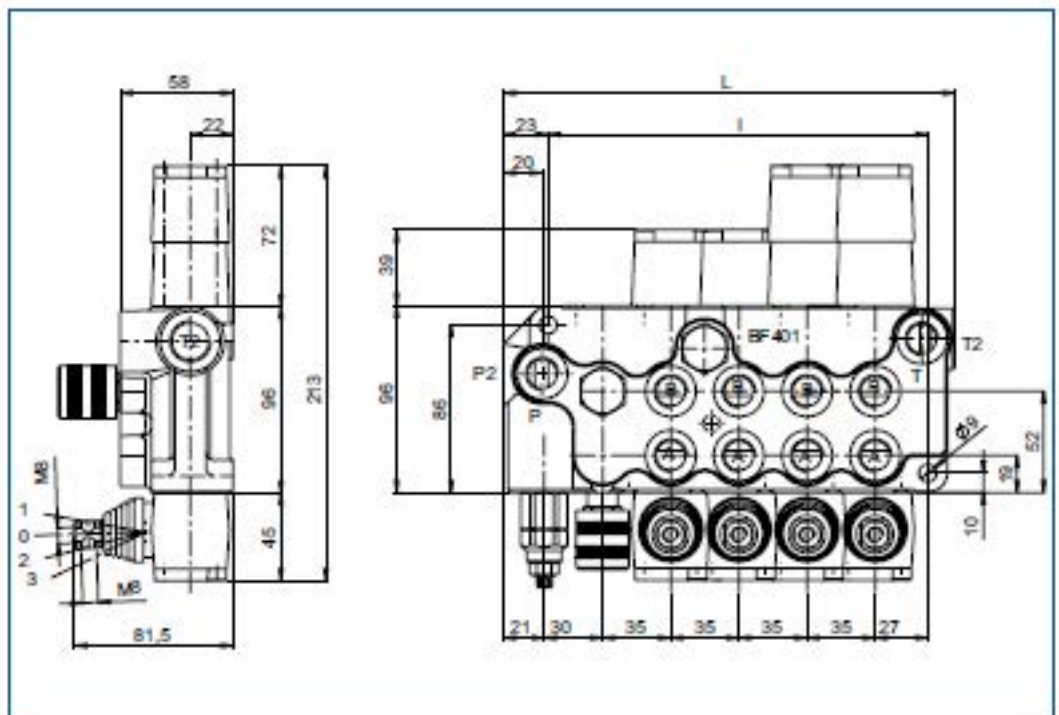
A/BT - TEMPERATURA OLIO 50°C - VISCOSITÀ 5,5 cP



Gli elementi prioritari hanno 5-8 bar in più a seconda della portata regolata.

Priority elements get 5-8 bar (72-116 PSI) more according to related flow.

BF401...	n° 1 elemento prioritario n° 1 priority element
BF402...	n° 2 elementi prioritari n° 2 priority elements
BF403...	n° 3 elementi prioritari n° 3 priority elements
BF404...	n° 4 elementi prioritari n° 4 priority elements
BF405...	n° 5 elementi prioritari n° 5 priority elements
BF406...	n° 6 elementi prioritari n° 6 priority elements



MOD	L	I	Kg
BF40.../1	125	90	3,9
BF40.../2	160	125	5,2
BF40.../3	195	160	6,4
BF40.../4	230	195	7,6
BF40.../5	265	230	8,8
BF40.../6	300	265	10

FILETTATURA STANDARD - STANDARD THREADS

COD	A-B	P	T	P ₂	T ₂
G	3/8"	3/8"	3/8"	1/2"	1/2"
F	3/4" - 16	3/4" - 16	3/4" - 16	7/8" - 14	7/8" - 14

◀ Su richiesta filettature diverse
Other threads available on request

