

BM 150

Qn
140l/min

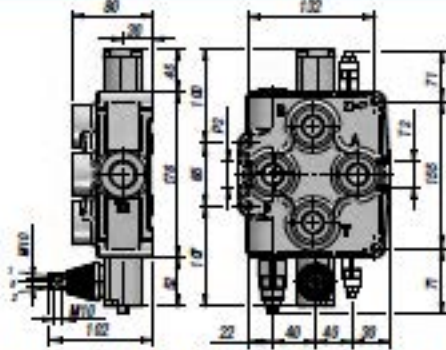
Q max
180l/min

BM 180

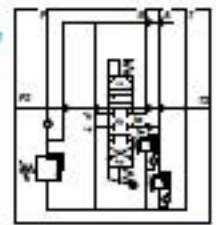
Qn
170l/min

Q max
190l/min

DISTRIBUTEUR MONOBLOC
MONOBLOCK VALVE
DISTRIBUIDOR MONOBLOQUE



SCHEMA AVEC "VLC-AB"
DIAGRAM WITH "VLC-AB"
ESQUEMA CON "VLC-AB"



Code Code Código	Type Type Tipo	N° Leviers Sections No. Nr. Palancas	Orifices - Threads - Orificios					PN bar	P MAX U bar	P MAX S bar	L	I	kg
			A-B BSP	P BSP	T BSP	P2 BSP	T2 BSP						
DBM6111001	BM150V1/GU/MO A1	1	3/4"	3/4"	3/4"	1"	1"	250	320	80	160	132	8,20
DBM7111001	BM180V1/GU/MO A1	2	1"	1"	1"	1"	1"	250	320	80	160	132	8,20

PN = Pression nominale - Nominal pressure - Presión nominal

P MAX U = Pression maxi sur les orifices - Max. pressure on ports - Presión Max. sobre los orificios

P MAX S = Pression maxi sur le retour - Max. pressure in tank-line - Presión Max. al retorno

Limiteur de pression - Relief Valve - Limitador de presión: X = 30:90 bar (70) - U = 80:230 bar (140) (Standard) - K = 150:300 bar (200)

SUR DEMANDE - ON REQUEST - BAJO PEDIDO: VALVES AUXILIAIRES - AUXILIARY VALVES - VALVULAS AUXILIARES

VL = LIMITEUR DE PRESSION - RELIEF VALVE - VALVULA LIMITADORA DE PRESSION

VC = VALVE ANTICAVITATION - ANTICAVITATION VALVE - VALVULA ANTICAVITACION

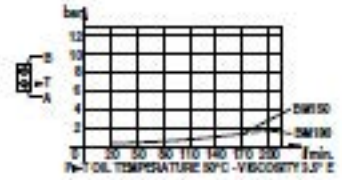
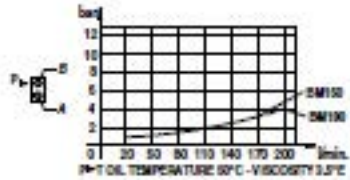
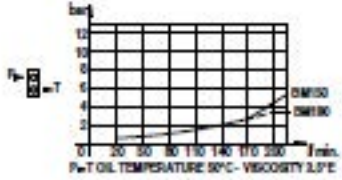
VLC = LIMITEUR DE PRESSION ET VALVE ANTICAVITATION - RELIEF VALVE AND ANTICAVITATION VALVE - VALVULA LIMITADORA DE PRESSION Y ANTICAVITACION

LES CODES CORRESPONDENT A - THESE CODES AND PRICES REFER TO - LOS CODIGOS SE REFIEREN A LOS MODELOS DE:

DOUBLE EFFET - 3 POSITIONS - RAPPEL RESSORT - A/B FERMEE - ORIFICES BSP - PREDISPOSITION POUR CENTRE A SUIVRE

DOUBLE ACTING TYPE - 3 POSITIONS - SPRING RETURN - A/B PORTS CLOSED - BSP THREADS - MACHINED FOR CARRY-OVER

DOBLE EFECTO - 3 POSICIONES - RETORNO POR MUELLE - A/B CERRADOS - ROSCAS BSP - PREPARADO PARA RETORNO A PRESSION (CARRY-OVER)



TIROIR SPOOL TYPE - CORREDERAS	
A	
B	
C	
D	

POSITIONNEUR SPOOL CONTROL - POSICIONADOR	
1	
2	
3	
6	
7	
8	

SUR DEMANDE ON REQUEST - BAJO PEDIDO	
MC	commande manuelle + telon manual operator with cam accionamiento manual con leva
DO	came de commande cam operator control por levas
1P	commande pneumatique pneumatic operator accionamiento neumático
HO	commande hydraulique hydraulic operator accionamiento hidraulico
MSW	microrupteur microswitch microinterruptor
CO	centre a suivre power beyond (carry over) retorno a presión (carry over)
CCP	centre fermé closed center plug centro cerrado

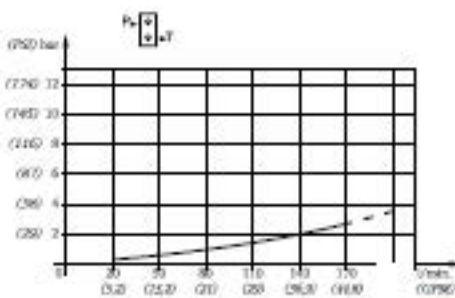
BMI 50

BMI 50

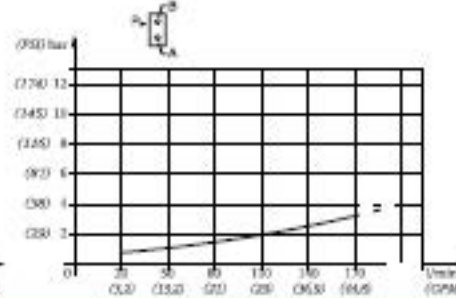
Caratteristiche generali / Technical characteristics		
	l/min	GPM
• Portata nominale / Nominal flow	140	37
• Portata limite / Max flow	180	48
	bar	PSI
• Pressione nominale / Nominal pressure	250	3600
• Pressione max sugli utilizzi / Max pressure on parts	320	4700
• Contropressione max allo scarico / Max pressure in tank line	80	1100



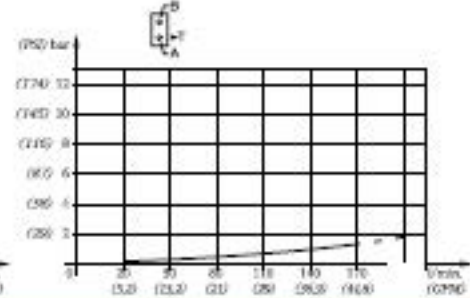
PA/B - TEMPERATURA OLIO 50°C - VISCOSITÀ 3,5 cP



PA/B - TEMPERATURA OLIO 50°C - VISCOSITÀ 3,5 cP

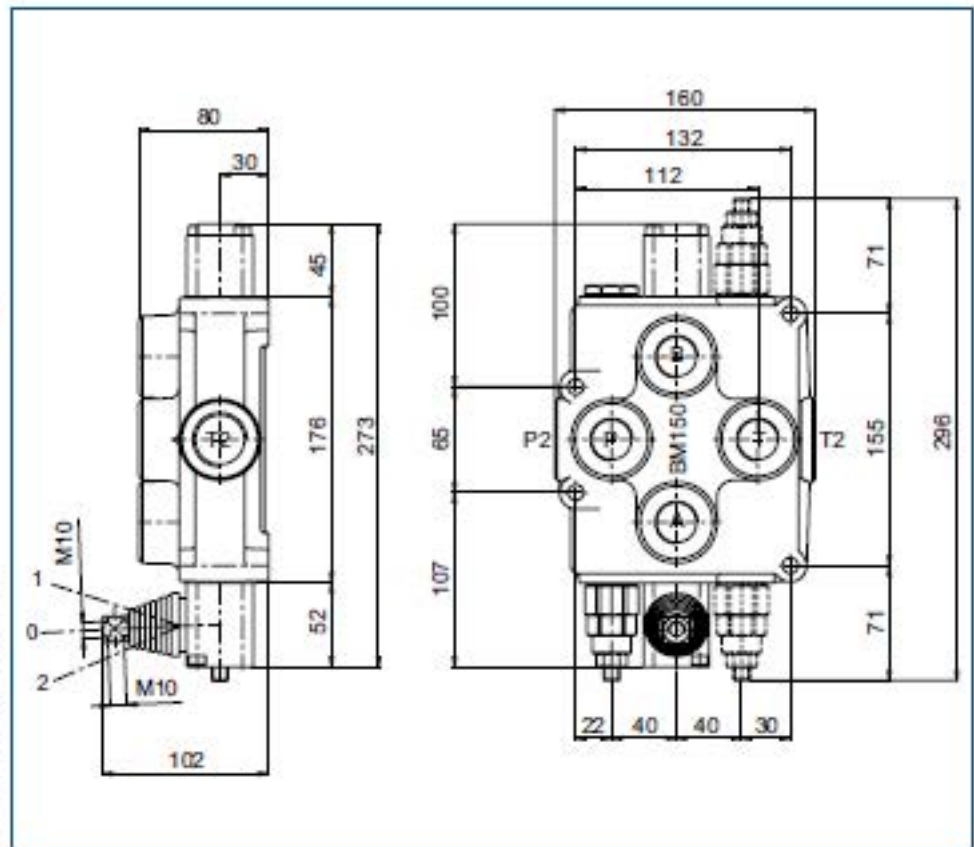
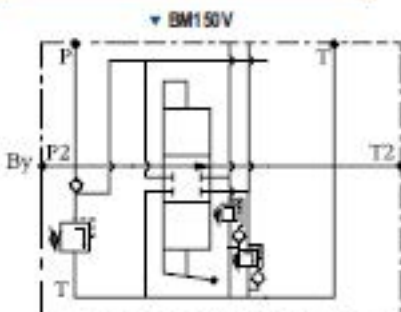


A/TM - TEMPERATURA OLIO 50°C - VISCOSITÀ 3,5 cP



Possibilità di valvole ausiliarie (vedi schema)
Possibility to have auxiliary valves (see diagram)

VL = limitatrici di pressione
VL = relief valve
VC = anticavitazione
VC = anticavitation valve
VLC = limitatrice e anticavitazione
VLC = combined relief and anticavitation



MOD	L	I	Kg
BM 150			82

FILETTATURA STANDARD - STANDARD THREADS					
COD	A-B	P	T	P ₂	T ₂
G	3/4"	3/4"	3/4"	1"	1"
F	1.5/16" - 12	1.5/16" - 12	1.1/8" - 12	1.5/16" - 12	1.5/16" - 12

◀ Su richiesta filettature diverse
Other threads available on request

