

**BM 150**

**Qn**  
140l/min

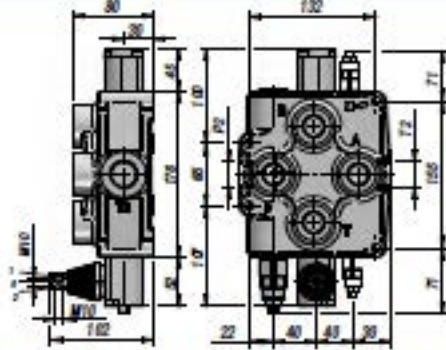
**Q max**  
180l/min

**BM 180**

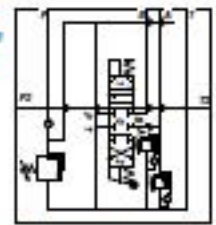
**Qn**  
170l/min

**Q max**  
190l/min

**DISTRIBUTEUR MONOBLOC**  
MONOBLOCK VALVE  
DISTRIBUIDOR MONOBLOQUE



SCHEMA AVEC "VLC-AB"  
DIAGRAM WITH "VLC-AB"  
ESQUEMA CON "VLC-AB"



Code Code Código	Type Type Tipo	N° Leviers Sections No. Nr. Palancas	Orifices - Threads - Orificios					PN bar	P MAX U bar	P MAX S bar	L	I	kg
			A-B BSP	P BSP	T BSP	P2 BSP	T2 BSP						
DBM6111001	BM150/1/GU/MO A1	1	3/4"	3/4"	3/4"	1"	1"	250	320	80	160	132	8,20
DBM7111001	BM180/1/GU/MO A1	2	1"	1"	1"	1"	1"	250	320	80	160	132	8,20

PN = Pression nominale - Nominal pressure - Presión nominal

P MAX U = Pression maxi sur les arifices - Max. pressure on ports - Presión Max. sobre los orificios

P MAX S = Pression maxi sur le retour - Max. pressure in tank-line - Presión Max. al retorno

Limiteur de pression - Relief Valve - Limitador de presión: X = 30-90 bar (70) - U = 80-230 bar (140) (Standard) - K = 150-300 bar (200)

SUR DEMANDE - ON REQUEST - BAJO PEDIDO: VALVES AUXILIAIRES - AUXILIARY VALVES - VALVULAS AUXILIARES

VL = LIMITEUR DE PRESSION - RELIEF VALVE - VALVULA LIMITADORA DE PRESSION

VC = VALVE ANTICAVITATION - ANTICAVITATION VALVE - VALVULA ANTICAVITACION

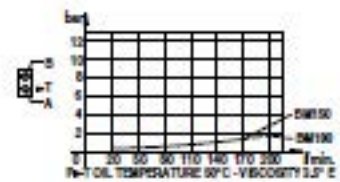
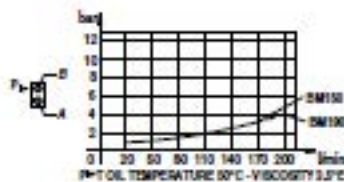
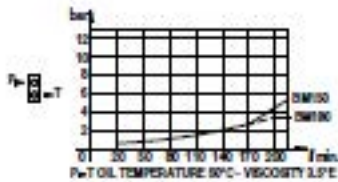
VLC = LIMITEUR DE PRESSION ET VALVE ANTICAVITATION - RELIEF VALVE AND ANTICAVITATION VALVE - VALVULA LIMITADORA DE PRESSION Y ANTICAVITACION

LES CODES CORRESPONDENT A - THESE CODES AND PRICES REFER TO - LOS CODIGOS SE REFIEREN A LOS MODELOS DE:

DOUBLE EFFET - 3 POSITIONS - RAPPEL RESSORT - A/B FERMEE - ORIFICES BSP - PREDISPOSITION POUR CENTRE A SUIVRE

DOUBLE ACTING TYPE - 3 POSITIONS - SPRING RETURN - A/B PORTS CLOSED - BSP THREADS - MACHINED FOR CARRY-OVER

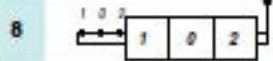
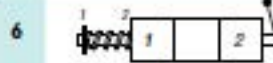
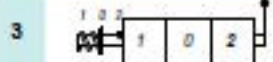
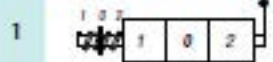
DOBLE EFECTO - 3 POSICIONES - RETORNO POR MUELLE - A/B CERRADOS - ROSCAS BSP - PREPARADO PARA RETORNO A PRESSION (CARRY-OVER)



**TIROIR**  
SPOOL TYPE - CORREDERAS



**POSITIONNEUR**  
SPOOL CONTROL - POSICIONADOR



**SUR DEMANDE**  
ON REQUEST - BAJO PEDIDO

**MC** commande manuelle + tefon  
manual operator with cam  
accionamiento manual con leva

**DO** came de commande  
cam operator  
control por levas

**1P** commande pneumatique  
pneumatic operator  
accionamiento neumático

**HO** commande hydraulique  
hydraulic operator  
accionamiento hidraulico

**MSW** microrupteur  
microswitch  
microinterruptor

**CO** centre a suivre  
power beyond (carry over)  
retorno a presión (carry over)

**CCP** centre fermé  
closed center plug  
centro cerrado

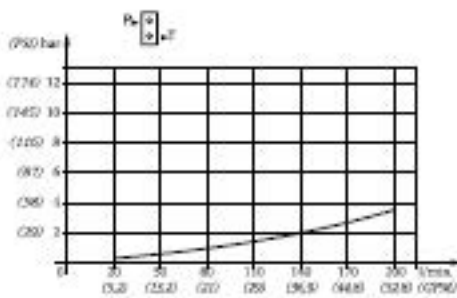
## BMI80

## BMI80

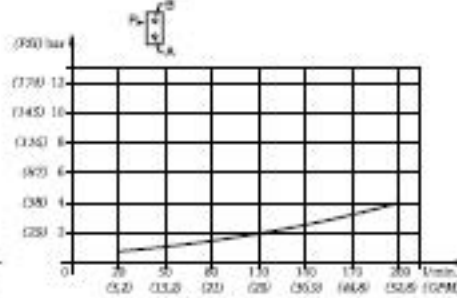
Caratteristiche generali / Technical characteristics		
	l/min	GPM
Portata nominale / Nominal flow	170	45
Portata limite / Max flow	190	50
	bar	PSI
Pressione nominale / Nominal pressure	250	3600
Pressione max sugli utilizzi / Max pressure on ports	320	4700
Contropressione max allo scarico / Max pressure in tank-line	80	1100



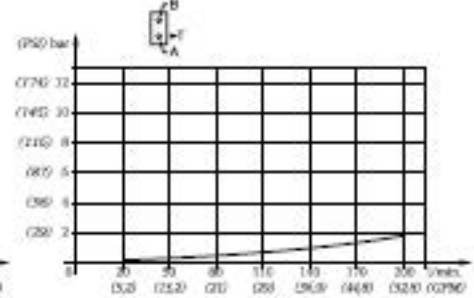
PA - TEMPERATURA OLIO 50°C - VISCOSITÀ 1,5 cP



PA/B - TEMPERATURA OLIO 50°C - VISCOSITÀ 1,5 cP

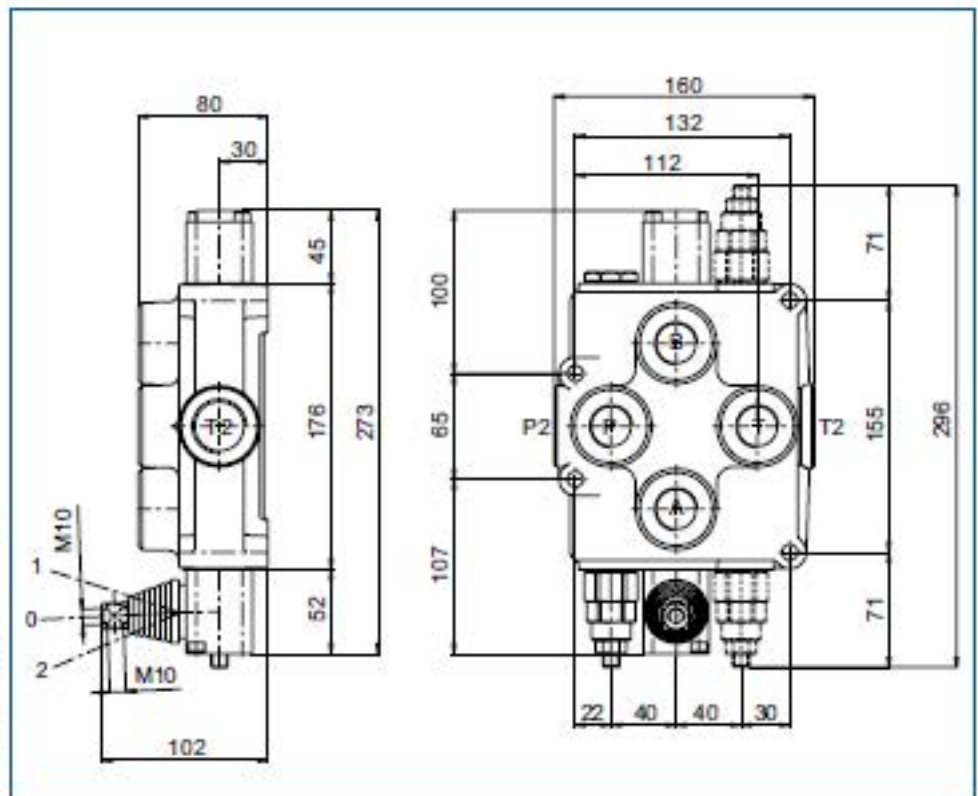
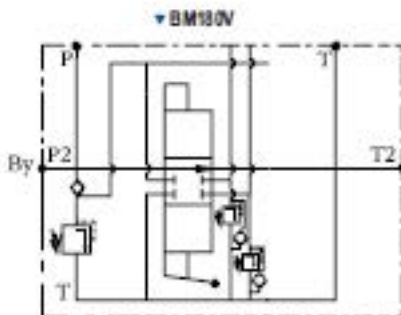


A/TM - TEMPERATURA OLIO 50°C - VISCOSITÀ 1,5 cP



Possibilità di valvole ausiliarie (vedi schema)  
Possibility to have auxiliary valves (see diagram)

VL = limitatrici di pressione
VL = relief valve
VC = anticavitazione
VC = anticavitation valve
VLC = limitatrice e anticavitazione
VLC = combined relief and anticavitation



MOD	L	I	Kg
BMI80			8,2

FILETTATURA STANDARD - STANDARD THREADS					
COD	A-B	P	T	P <sub>1</sub>	T <sub>1</sub>
G	1"	1"	1"	1"	1"
F	1.5/16" - 12	1.5/16" - 12	1.5/16" - 12	1.5/16" - 12	1.5/16" - 12

◀ Su richiesta filettature diverse  
Other threads available on request

