

Code Code Código	Type Type Tipo	N° Leviers Sections No. Nr. Palancas	Orifices - Threads - Orificios					PN bar	P MAX U bar	P MAX S bar	L	I	kg
			A-B BSP	P BSP	T BSP	P2 BSP	T2 BSP						
DBM311001	BM 50/1/GU/MO A1	1								94	55	2,80	
DBM321001	BM 50/2/GU/MO A1x2	2								129	90	4,20	
DBM331001	BM 50/3/GU/MO A1x3	3								164	125	5,50	
DBM341001	BM 50/4/GU/MO A1x4	4	1/2"	1/2"	1/2"	1/2"	1/2"	250	320	80	199	160	6,70
DBM351001	BM 50/5/GU/MO A1x5	5									234	195	7,90
DBM361001	BM 50/6/GU/MO A1x6	6									269	230	9,30
DBM381001	BM 50/8/GU/MO A1x8	8									339	300	12,80

PN – Pression nominale - Nominal pressure - Presión nominal

P MAX U – Pression maxi sur les orifices - Max. pressure on ports - Presión Max. sobre los orificios

P MAX S – Pression maxi sur le retour - Max. pressure in tank-line - Presión Max. al retorno

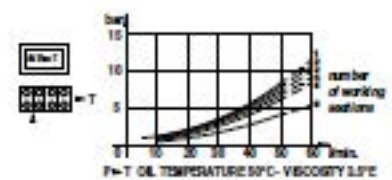
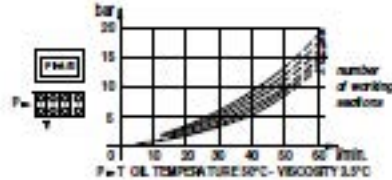
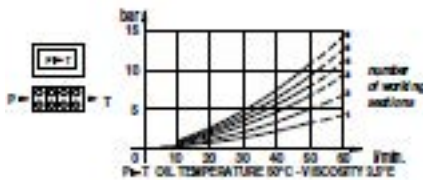
Limiteur de pression - Relief Valve - Limitador de presión: X = 30-90 bar (70) - U = 80-230 bar (140) (Standard) - K = 150-300 bar (200)

LES CODES CORRESPONDENT A - THESE CODES AND PRICES REFER TO - LOS CODIGOS SE REFIEREN A LOS MODELOS DE:

DOUBLE EFFET - 3 POSITIONS - RAPPEL RESSORT - A/B FERMEE - ORIFICES BSP - PREDISPOSITION POUR CENTRE A SUIVRE

DOUBLE ACTING TYPE - 3 POSITIONS - SPRING RETURN - A/B PORTS CLOSED - BSP THREADS - MACHINED FOR CARRY-OVER

DOBLE EFECTO - 3 POSICIONES - RETORNO POR MUELLE - A/B CERRADOS - ROSCAS BSP - PREPARADO PARA RETORNO A PRESION (CARRY-OVER)



TIROIR SPOOL TYPE - CORREDERAS	
A	
B	
C	
D	
L	
Z	

POSITIONNEUR SPOOL CONTROL - POSICIONADOR	
1	
2	
3	
6	
7	
8	
12	
42	

SUR DEMANDE ON REQUEST - BAJO PEDIDO	
MC	commande manuelle + teton manual operator with cam accionamiento manual con leva
MX	levier de sécurité safety lever palanca de seguridad
DO	came de commande cam operator control por levas
JS	double commande joystick joystick
1P	commande pneumatique pneumatic operator accionamiento neumático
MSW	microrupteur microswitch microinterruptor
CO	centre a suivre power beyond (carry over) retorno a presión (carry over)
CCP	centre fermé closed center plug centro cerrado

BM50 da 1 a 6 leve

BM50 from 1 to 6 levers

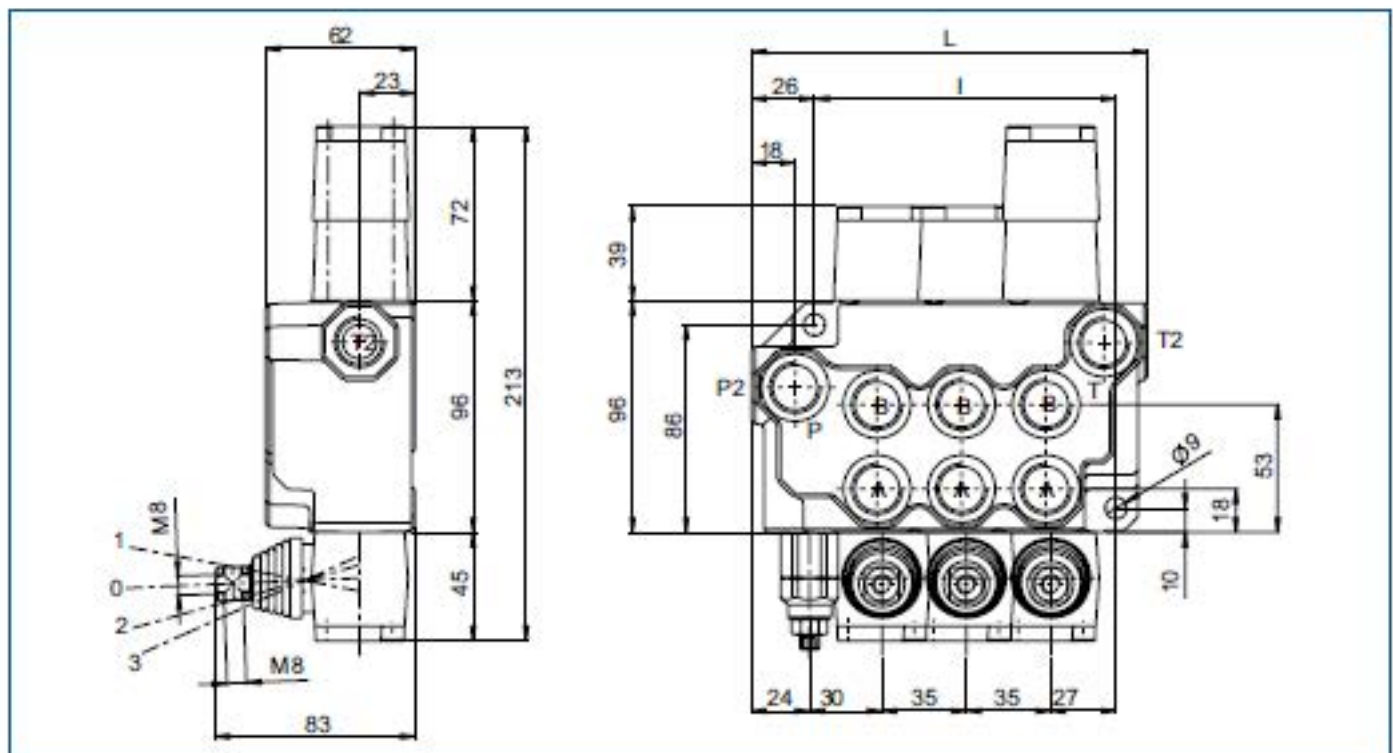
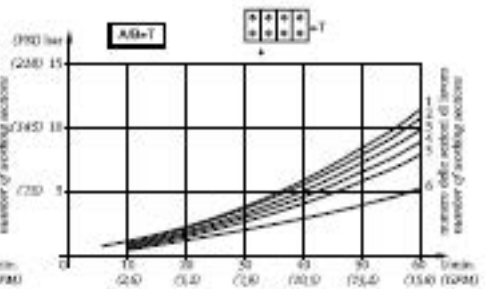
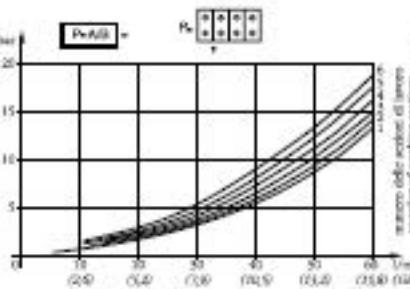
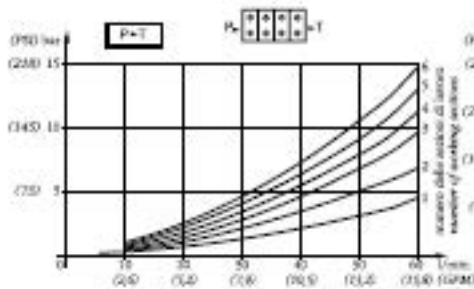
Caratteristiche generali / Technical characteristics		
	l/min	GPM
• Portata nominale / Nominal flow	50	13,1
• Portata limite / Max flow	60	15,9
	bar	PSI
• Pressione nominale / Nominal pressure	250	3600
• Pressione max sugli utilizzi / Max pressure on ports	320	4700
• Contropressione max allo scarico / Max pressure in tank-line	80	1100



INT - TEMPERATURA OIL 50°C - VISCOSITÀ 3,5cP

PAIR - TEMPERATURA OIL 50°C - VISCOSITÀ 3,5cP

AIR - TEMPERATURA OIL 50°C - VISCOSITÀ 3,5cP



MOD	L	I	Kg
BM50V1	94	55	28
BM50V2	129	90	42
BM50V3	164	125	55
BM50V4	199	160	67
BM50V5	234	195	79
BM50V6	269	230	93

FILETTATURA STANDARD - STANDARD THREADS

COD	A-B	P	T	P ₁	T ₁
G	1/2"	1/2"	1/2"	1/2"	1/2"
F	7/8" - 14	7/8" - 14	7/8" - 14	7/8" - 14	7/8" - 14

«Su richiesta filettature diverse
Other thread's available on request»

