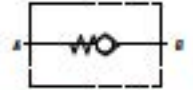
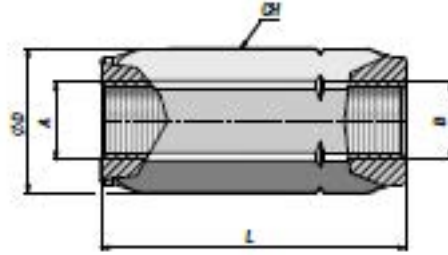


VUR/C

**CLAPET ANTI-RETOUR (ETANCHEITE PAR CONE)
CHECK VALVE (POPPET TYPE)**



Code Code	A - B BSP	Q MAX l/min	P MAX bar	Type Type	L	ØD	CH	kg
VSG303.C10000	1/4"	30	400	VUR 010-C	58	21	19	0,10
VSG303.C20000	3/8"	50	400	VUR 020-C	62	27	24	0,18
VSG303.C30000	1/2"	90	350	VUR 030-C	71	33	30	0,31
VSG303.C40000	3/4"	130	300	VUR 040-C	83	40	36	0,56
VSG303.C50000	1"	180	270	VUR 050-C	106	59	45	0,91
VSG303.C60000	1 1/4"	250	250	VUR 060-C	127	63	55	1,48
VSG303.C70000	1 1/2"	380	200	VUR 070-C	138	74	65	2,37

Pression d'ouverture - Opening pressure : bar 0,5 (Standard) - 4 - 8

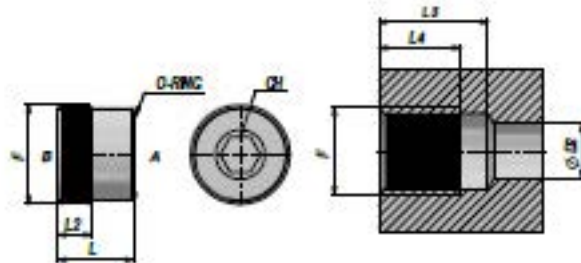
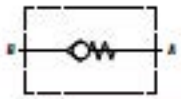
MATERIEL CORPS : ACIER
BODY MATERIAL : STEEL

MONTAGE EN LIGNE
LINE MOUNTING

**CLAPET ANTI-RETOUR (ETANCHEITE PAR CONE)
CHECK VALVE (POPPET TYPE)**

NEW!

VVRI



Code Code	F BSP	Q MAX V/min	P MAX bar	Type Type	L	L2	L3	L4	ØD2	CH	O-ring	kg x 100
VCG303.010000	1/4"	20	350	VVRI 010	10.0	6	24.0	21.5	7	5	9x1	1,00
VCG303.020000	3/8"	50	350	VVRI 020	11.5	7	25.5	23.0	9	6	10x1.5	2,00
VCG303.030000	1/2"	80	350	VVRI 030	13.5	8	30.5	28.0	12	8	14.1x1.6	3,00

Pression d'ouverture - Opening pressure : bar 0.5

MATERIEL CORPS : ACIER
BODY MATERIAL : STEEL

CARTOUCHE
CARTRIDGE