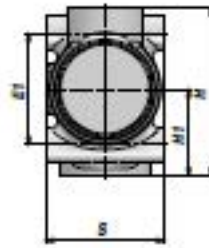
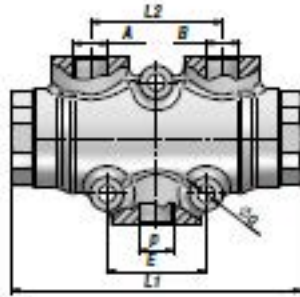


## VEQ

DIVISEUR DE DEBIT  
FLOW DIVIDER



Code Code	P BSP	A - B BSP	Q MIN/MAX l/min	P MAX bar	Type Type	L1	L2	E	E1	ØG	H1	H	S	kg
V3615.0311	3/8"	3/8"	1/ 3	250	VEQ 8	117	53	40	45	7	35	68	48	1,27
V3615.0312	3/8"	3/8"	3/ 6	250	VEQ 10	117	53	40	45	7	35	68	48	1,27
V3615.0313	3/8"	3/8"	6/10	250	VEQ 15	117	53	40	45	7	35	68	48	1,28
V3615.0314	3/8"	3/8"	10/20	250	VEQ 20	117	53	40	45	7	35	68	48	1,27
V3615.0315	3/8"	3/8"	20/32	250	VEQ 22	117	53	40	45	7	35	68	48	1,28
V3615.0316	1/2"	3/8"	25/40	250	VEQ 25	117	53	40	45	7	35	68	48	1,28
V3615.0317	1/2"	3/8"	40/60	250	VEQ 30	117	53	40	45	7	35	68	48	1,26
V3615.0318	1/2"	3/8"	60/80	250	VEQ 50	117	53	40	45	7	35	68	48	1,26

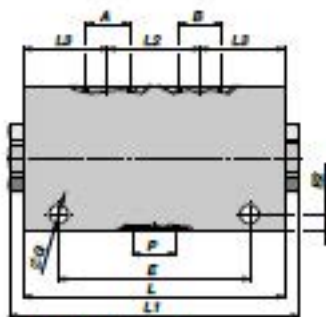
MATERIEL CORPS : FONTE  
BODY MATERIAL : CAST IRON

MONTAGE EN LIGNE  
LINE MOUNTING

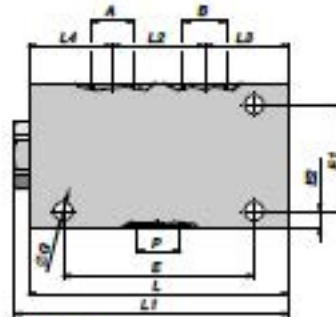
## VDF

NEW!

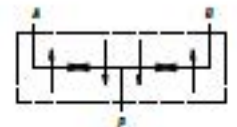
DIVISEUR DE DEBIT  
FLOW DIVIDER



VDF 38 - VDF 12



VDF 34



Code Code	P BSP	A - B BSP	Q MIN/MAX l/min	P MAX bar	Type Type	L	L1	L2	L3	L4	E	E1	E2	ØG	H	S	kg
VAG501.20*000	3/8"	3/8"	6.5 / 38	210	VDF 38-*	121	135.0	53	34	-	100	-	7	6.5	60	40	0,87
VAG501.25*000	1/2"	3/8"	6.5 / 38	210	VDF 12-*	121	135.0	53	34	-	100	-	7	6.5	60	40	0,85
VAG501.35*000	3/4"	1/2"	15 / 90	210	VDF 34-*	120	129.5	48	42	30	102	60	10	6.5	80	40	0,92

\* - Plage de Réglage - Flow Range (l/min - 50 bar) :

\* VDF 38-A = 6.5-12 - VDF 38-B = 13-23 - VDF 38-C = 24-38

\* VDF 12-A = 6.5-12 - VDF 12-B = 13-23 - VDF 12-C = 24-38

\* VDF 34-A = 15-55 - VDF 34-B = 56-90

MATERIEL CORPS : ALUMINIUM  
BODY MATERIAL : ALUMINIUM

MONTAGE EN LIGNE  
LINE MOUNTING