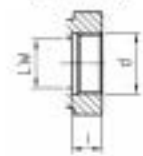


High-Pressure Block Body Ball Valve T-Bore Three-Way Selector • Female BSP Thread

Female BSP Thread (DIN ISO 228)



When ordering the standard option as table below, the following materials w

- Body, ball and stem: Carbon Steel
- Lever: Zinc (STAUFF)
Carbon Steel
- Ball seat: Delrin® (POM)
- O-rings: FKM (Viton®)

Pressure Inlet only from the Center Port

STAUFF Size	Thread Size d	Nominal Size DN	Dimensions (mm)																Nom. Pressure (MPa)	Weight (kg)
			LW	L	l	b	B	H	h	m	S	V	SW	K	I	H2				
02	G 1/8 BSP	4	5	69	40	13	29	47	33	13,5	34,5	11	9	115	10	82	500	0,40		
			20	2,72	1,57	,51	1,14	1,85	1,30	,53	1,36	,43	,35	4,53	,30	3,23	7250	,88		
04	G 1/4 BSP	6	6	69	40	13	29	47	33	13,5	34,5	11	9	115	14	82	500	0,46		
			24	2,72	1,57	,51	1,14	1,85	1,30	,53	1,36	,43	,35	4,53	,55	3,23	7250	1,01		
06	G 3/8 BSP	10	10	72	43	16	35	52	38	17,5	36	11	9	115	14	87	500	0,60		
			30	2,83	1,69	,63	1,38	2,05	1,50	,69	1,42	,43	,35	4,53	,55	3,42	7250	1,32		
08	G 1/2 BSP	13	13	83	48	17,5	38	54	40	10	41,5	11	9	115	16,3	80	500	0,70		
			51	3,27	1,89	,69	1,50	2,13	1,57	,75	1,63	,43	,35	4,53	,64	3,50	7250	1,54		
12	G 3/4 BSP	20	20	95	62	24,5	52	75	57	24,5	47,5	14	14	170	18	126	315	1,80		
			79	3,74	2,44	,95	2,05	2,95	2,24	,96	1,87	,55	,55	6,69	,71	4,96	4500	3,96		
16	G 1 BSP	25	25	113	66	29	61	83	65	29,5	56,5	14	14	170	20	134	315	2,40		
			98	4,45	2,60	1,14	2,40	3,27	2,56	1,16	2,22	,55	,55	6,69	,79	5,73	4500	5,28		
20	G 1-1/4 BSP	32	30	111	81	39		106	84,5	39	55	16,5	17	320	22	170	350	3,80		
			118	4,37	3,19	1,54		4,17	3,33	1,54	2,17	,65	,67	12,60	,87	6,69	5000	8,36		
24	G 1-1/2 BSP	40	38	130	104	53		127	106	53	65	16,5	17	320	24	191	350	6,20		
			150	5,12	4,09	2,09		5,00	4,17	2,09	2,56	,65	,67	12,60	,94	7,52	5000	13,64		
32	G 2 BSP	50	48	150	118	58	116	137	116	58	75	16,5	17	320	26	201	350	7,80		
			189	5,91	4,65	2,28	4,57	5,39	4,57	2,28	2,95	,65	,67	12,60	1,02	7,91	5000	17,16		